



Smith & Associates
245 S. Washington, Chillicothe, MO 64601
660-646-2141 www.c21chillicothe.com

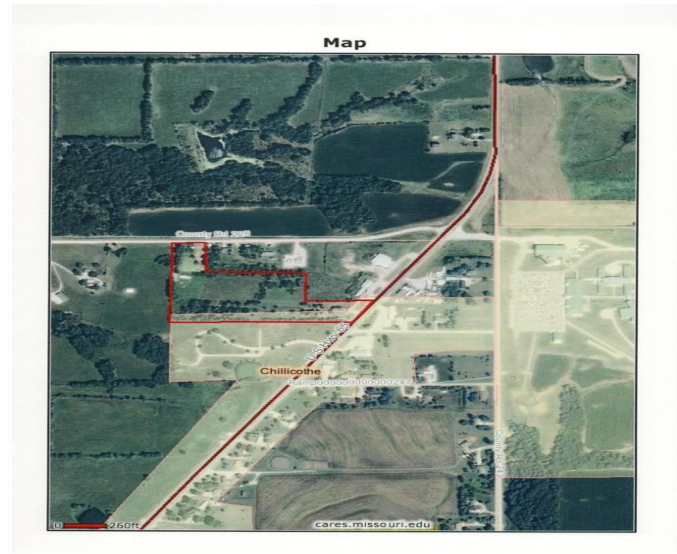


- 3 lots 2 rented for \$65 a month, 1 vacant
- Billboard pay \$750 per year
- Utilities: FEC and Rural water
- Taxes: \$704.65
- Great location for convent store, restaurant, or gas station.



Hwy 65 North \$225,000

11.2 acres m/I, 3 acres zoned with highway frontage, balance is zoned residential with gravel access.



For More Information Please Contact:

Rick Hibler: 660-646-2141
Cell: 660-247-0950
ricky.hibler@century21.com

Listing broker does not guarantee information describing property. Parties are advised to verify the information through inspections and due diligence.