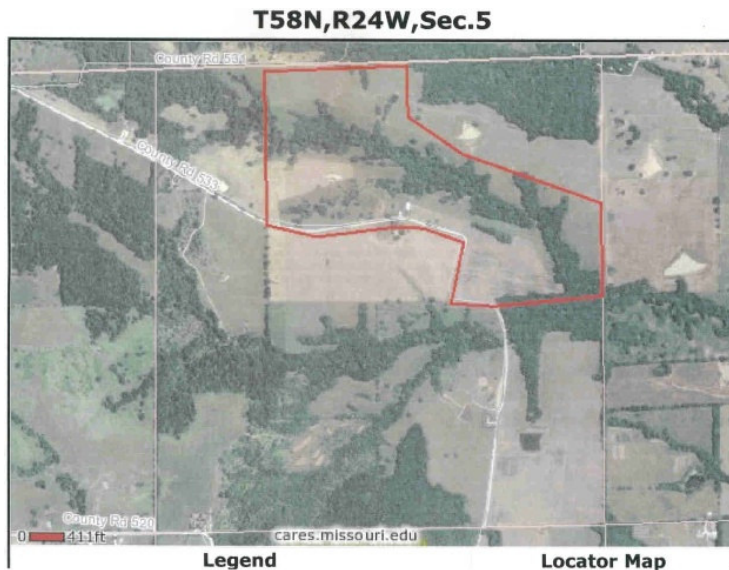


Century 21 Smith & Associates
245 S. Washington St. Chillicothe, MO 64601
660-646-2141

LIV 533 CHILLICOTHE



- **133 Acres**
- **Livingston County**
- **Chillicothe Schools**

133 Acres m/1 of pasture, timber & CRP paying \$1750 total. Lots of mature timber, great building site & hunting. 7 miles from town.

\$232,750

CHARLOTTE HOSKINS 646-2141
CHOSKINS@C21CHILLICOTHE.COM

C21CHILLICOTHE.COM

LISTING BROKER DOES NOT GUARANTEE INFORMATION DESCRIBING PROPERTY. PARTIES ARE ADVISED TO VERIFY THE INFORMATION THROUGH PERSONAL INSPECTION.