



Smith & Associates

245 S. Washington, Chillicothe, MO 64601

660-646-2141 www.c21chillicothe.com



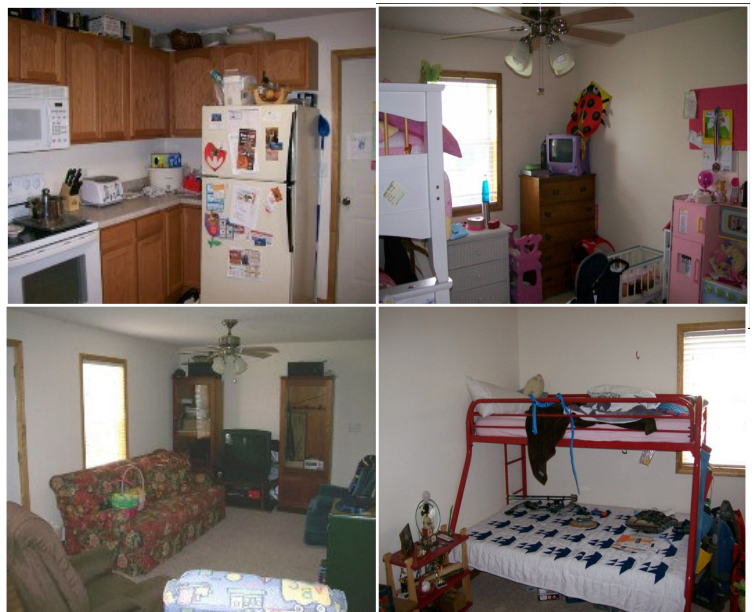
Move Right In!!

\$115,000

4454 Hwy 65 N. Chillicothe

This 3 Bedroom, 1 Bath home was completely remodeled just 3 years ago. The home features nice new flooring, updated kitchen w/ oak cabinetry, and main floor utilities. Outside the home features 7.21 Acres and is just 5.5 Miles from Chillicothe city Limits. #3125E

- Style: Ranch
- Year Built: 1940
- Exterior: Vinyl Siding & Shutters
- Square Feet: 1,184
- Bedrooms: 3
- Baths: 1
- Basement: Crawl Space
- Parking: Gravel Drive
- Heating: FALP
- Cooling: Central Air
- Deck: Front
- Lot Size: 7.21



For More Information Please Contact:

Rick Hibler: 660-646-2141

Cell: 660-247-0950

ricky.hibler@century21.com

Listing broker does not guarantee information describing property. Parties are advised to verify the information through inspections and due diligence.