



Smith & Associates

245 S. Washington, Chillicothe, MO 64601

660-646-2141 www.c21chillicothe.com



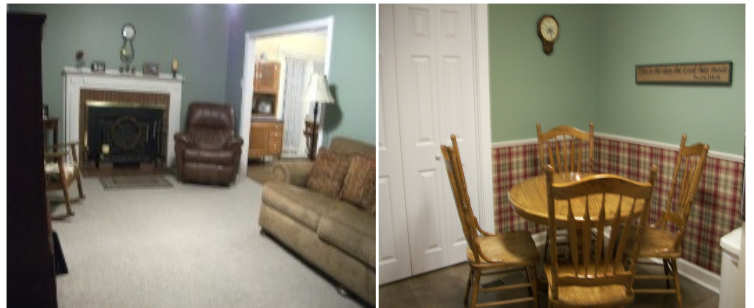
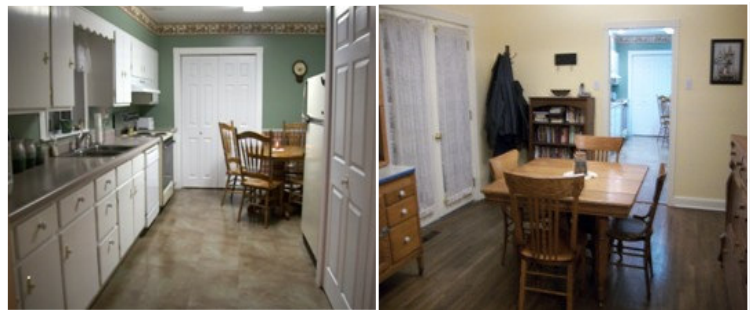
Charm, Character & Personality

\$138,500

1700 Third Street

"You'll Love This Quaint Older Home!!" Dated in the 1900's Perfect for showing off Grandma's Antiques. Features Fireplace, Original Hardwood Floors, Lots of Storage & Built-ins! This spacious 2,436 Sq. ft. home also has a 26x13 screened in porch. The home has been gutted, insulated, new wiring, breaker box, plumbing, sheet rock, windows, doors, paint and some floor coverings, just to name a few. Call Tammy today for a showing on this fabulous home. #4094

- Style: 1 1/2 Story
- Year Built: 1901
- Exterior: Lap Siding
- Square Feet: 2,436
- Bedrooms 3
- Baths: 2 1/2
- Basement: Partial unfinished
- Parking: 1 Car attached carport
- Heating: NGFA
- Cooling: Central Air
- Lot Size: 115X150 (corner)
- Storage building
- Taxes: \$857.79



For More Information Please Contact:

Tammy Dye: 660-646-2141

Cell: 660-707-3105

tammera.dye1@century21.com

Listing broker does not guarantee information describing property. Parties are advised to verify the information through personal inspection.